

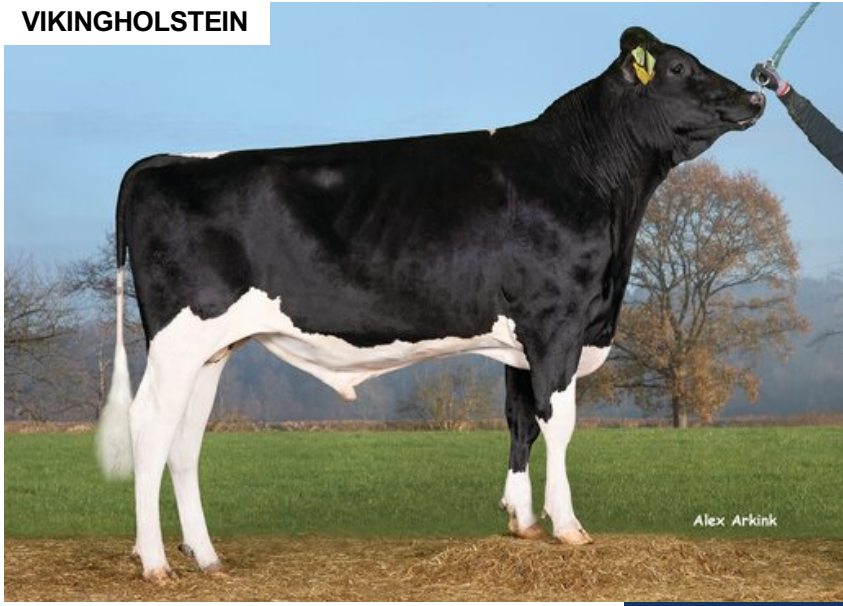
VH Ascari

DNK 261308

Beta casein: A2A2 Kappa casein: BB aAa: 234
 DOB.: 20/10/2019 VH Alberta x VH Pogba P x Style P
 Proven Polled: POF



VIKINGHOLSTEIN



Alex Arkink

NTM 21

RECOMMENDED FOR

- MILK • FERTILITY • HOOF HEALTH
- PROCROSS LIQUID • PROCROSS SOLIDS

Dam average (305 days) 12403 kg 4 % F / 496 kgF 3.57 % P / 443 kgP
 Est. dtr. average (305 days) 11732 kg 4.11 % F / 476 kgF 3.53 % P / 412 kgP

NTM August 2024

PRODUCTION & EFFICIENCY NO. OF DTRS 2362 REL 99%

		90	100	110	120
Production	111				
Milk kg	109				
Protein kg	113				
Protein %	104				
Fat, kg	108				
Fat, %	99				
Growth	109				
Saved feed	77				
Persistency	97				

FUNCTIONAL NO. OF DTRS 2094 REL 98%

		90	100	110	120
Daughter fertility	117				
Calving sire	106				
Calving maternal	98				
Udder health	97				
General health	111				
Longevity	99				
Hoof health	108				
Youngstock survival	108				
Milkability	105				
Temperament	113				

OVERALL CONFORMATION NO. OF DTRS 507 REL 92%

		90	100	110	120
Frame	101				
Feet & legs	85				
Udder	117				

CONFORMATION

		80	90	100	110	120
Stature	Short					Tall 101
Rib structure	Coarse					Angular 104
Chest width	Narrow					Wide 98
Body depth	Shallow					Deep 94
Rump width	Narrow pins					Wide pins 106
Rump angle	High pins					Low pins 105
Top line	Weak					Strong 110
Rear legs, side view	Straight					Sickled 107
Rear legs, rear view	Toes out					Parallel 68
Foot angle	Low					Steep 88
Bone quality	Coarse					Fine and thin 108
Hock quality	Filled					Dry 110
Fore udder attachme...	Loose					Strong 116
Rear udder height	Low					High 113
Rear udder width	Narrow					Wide 100
Udder support	Weak					Strong 115
Udder depth	Deep					High 114
Udder balance	Deep rear					Deep front 104
Teat length	Short					Long 98
Teat thickness	Thin					Thick 106
Teat placement (front)	Wide					Close 101
Teat placement (back)	Wide					Close 119