

VH Blast

DEU 666882646

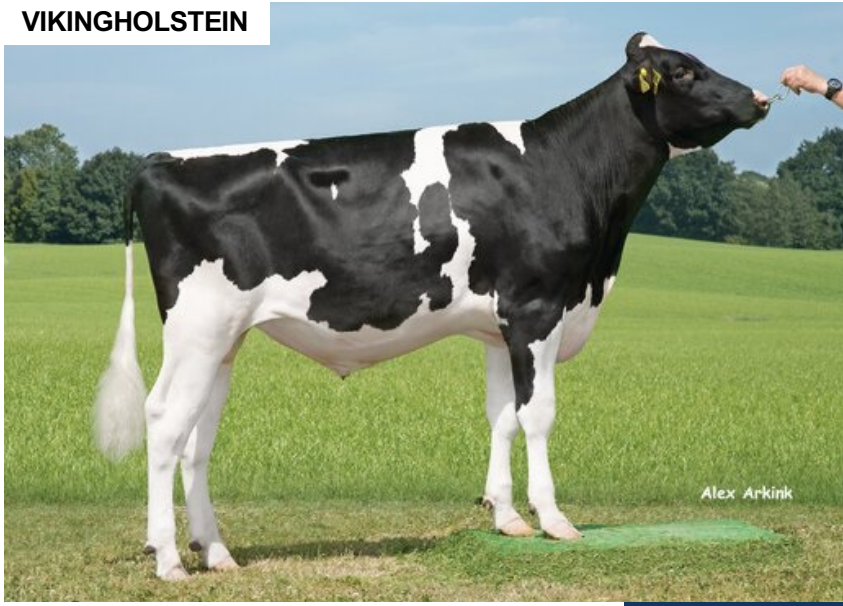
Beta casein: A2A2 Kappa casein: AB aAa: 324156

DOB.: 20/06/2016 Beatstick x Sargeant x Bookem

Proven Polled: POF



VIKINGHOLSTEIN



Alex Arkink

NTM 14

RECOMMENDED FOR

- ROBOT • MILK • FERTILITY
- PROCROSS LIQUID • PROCROSS SOLIDS

Dam average (305 days) Data not available
 Est. dtr. average (305 days) 12159 kg 3.83 % F / 464 kgF 3.46 % P / 420 kgP

NTM August 2024

PRODUCTION & EFFICIENCY NO. OF DTRS 601 REL 98%

	90	100	110	120
Production	108			
Milk kg	122			+
Protein kg	121			+
Protein %	95			
Fat, kg	98			
Fat, %	82			
Growth	94			
Saved feed	102			
Persistency	114			

FUNCTIONAL NO. OF DTRS 600 REL 97%

	90	100	110	120
Daughter fertility	106			
Calving sire	101			
Calving maternal	110			
Udder health	100			
General health	92			
Longevity	108			
Hoof health	102			
Youngstock survival	99			
Milkability	101			
Temperament	116			

OVERALL CONFORMATION NO. OF DTRS 224 REL 91%

	90	100	110	120
Frame	114			
Feet & legs	116			
Udder	115			

CONFORMATION

	80	90	100	110	120
Stature	Short				Tall 120
Rib structure	Coarse				Angular 109
Chest width	Narrow				Wide 103
Body depth	Shallow				Deep 94
Rump width	Narrow pins				Wide pins 117
Rump angle	High pins				Low pins 99
Top line	Weak				Strong 93
Rear legs, side view	Straight				Sickled 101
Rear legs, rear view	Toes out				Parallel 122
Foot angle	Low				Steep 97
Bone quality	Coarse				Fine and thin 104
Hock quality	Filled				Dry 111
Fore udder attachme...	Loose				Strong 107
Rear udder height	Low				High 119
Rear udder width	Narrow				Wide 117
Udder support	Weak				Strong 77
Udder depth	Deep				High 112
Udder balance	Deep rear				Deep front 73
Teat length	Short				Long 93
Teat thickness	Thin				Thick 96
Teat placement (front)	Wide				Close 93
Teat placement (back)	Wide				Close 85