

VH Yngvar

DEU 361229595

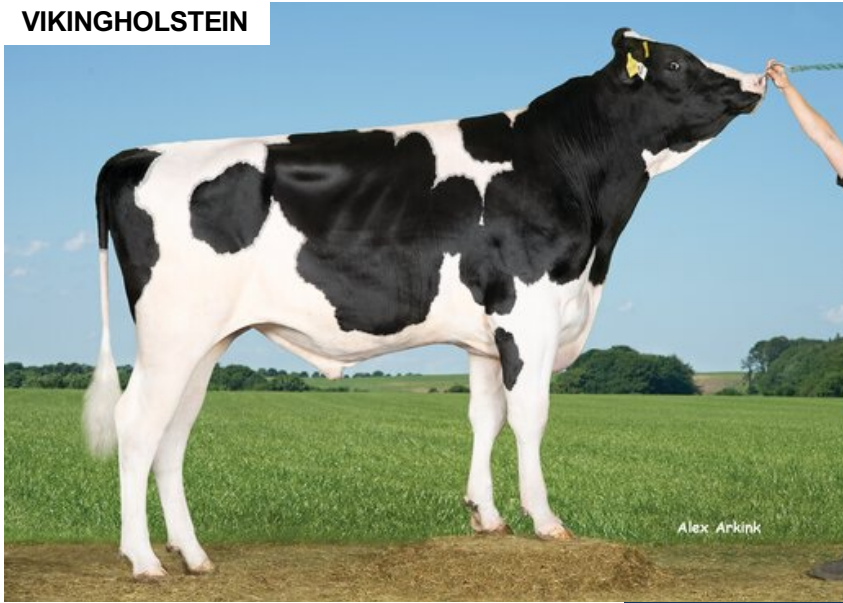
Beta casein: A2A2 Kappa casein: BB aAa: 243

DOB.: 16/01/2019 Yoda x Dozer x Balisto

Proven Polled: POF



VIKINGHOLSTEIN



NTM 18

RECOMMENDED FOR

- MILK
- PROCROSS LIQUID
- PROCROSS SOLIDS

Dam average (305 days) Data not available
 Est. dtr. average (305 days) 11634 kg 4.25 % F / 485 kgF 3.49 % P / 404 kgP

NTM August 2024

PRODUCTION & EFFICIENCY NO. OF DTRS 4339 REL 99%

	90	100	110	120
Production	110			
Milk kg	106			
Protein kg	105			
Protein %	98			
Fat, kg	115			
Fat, %	108			
Growth	98			
Saved feed	89			
Persistency	112			

FUNCTIONAL NO. OF DTRS 4221 REL 99%

	90	100	110	120
Daughter fertility	99			
Calving sire	104			
Calving maternal	109			
Udder health	106			
General health	113			
Longevity	114			
Hoof health	103			
Youngstock survival	91			
Milkability	101			
Temperament	105			

OVERALL CONFORMATION NO. OF DTRS 1358 REL 93%

	90	100	110	120
Frame	109			
Feet & legs	111			
Udder	125			

CONFORMATION

	80	90	100	110	120
Stature	Short				Tall 111
Rib structure	Coarse				Angular 106
Chest width	Narrow				Wide 104
Body depth	Shallow				Deep 100
Rump width	Narrow pins				Wide pins 104
Rump angle	High pins				Low pins 91
Top line	Weak				Strong 104
Rear legs, side view	Straight				Sickled 110
Rear legs, rear view	Toes out				Parallel 104
Foot angle	Low				Steep 96
Bone quality	Coarse				Fine and thin 111
Hock quality	Filled				Dry 119
Fore udder attachme...	Loose				Strong + 124
Rear udder height	Low				High + 121
Rear udder width	Narrow				Wide 113
Udder support	Weak				Strong 108
Udder depth	Deep				High + 133
Udder balance	Deep rear				Deep front + 122
Teat length	Short				Long 79
Teat thickness	Thin				Thick 85
Teat placement (front)	Wide				Close 117
Teat placement (back)	Wide				Close + 121